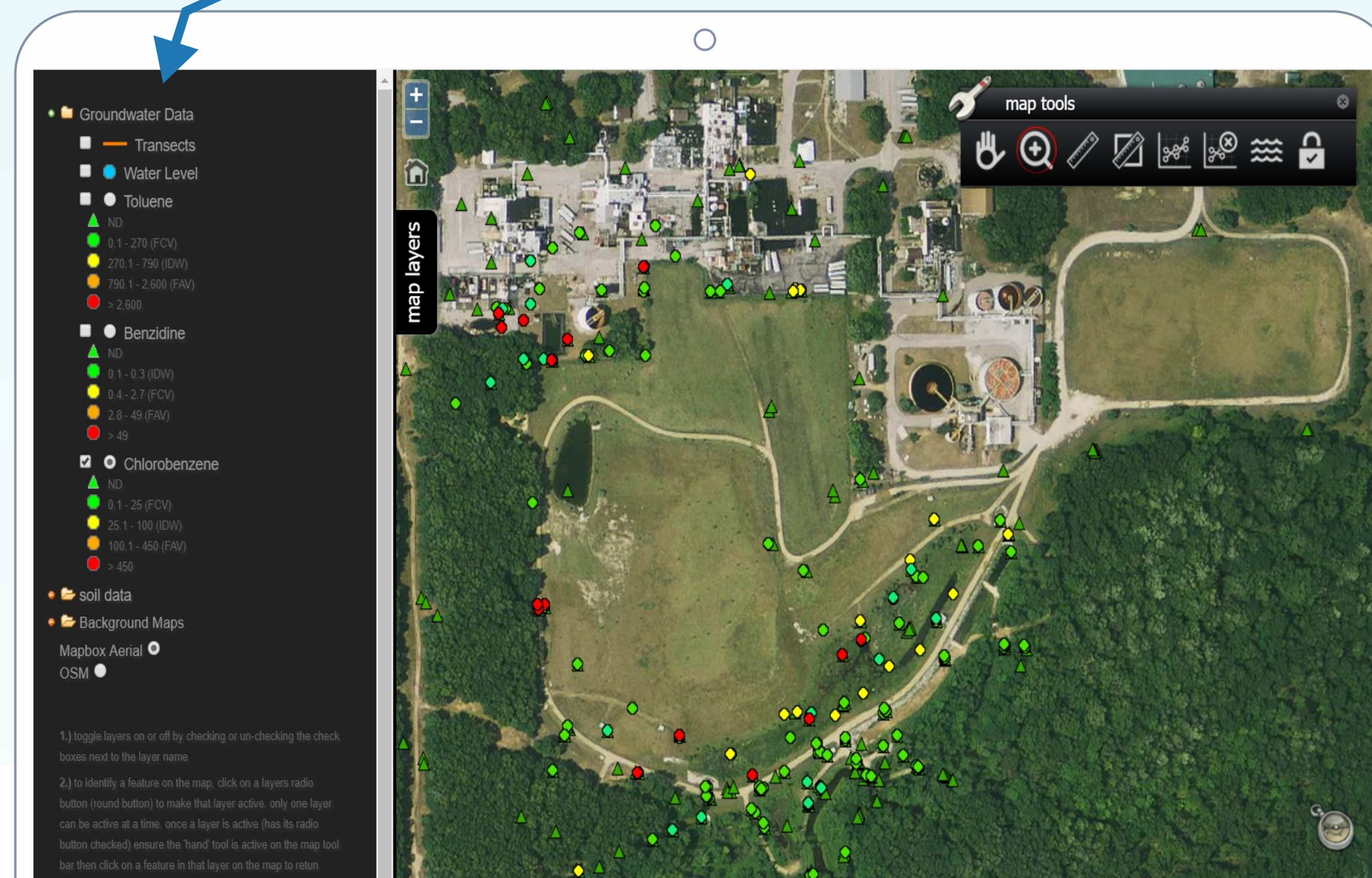


NewFields WebGIS

NewFields WebGIS is a bespoke resource for online environmental data management.

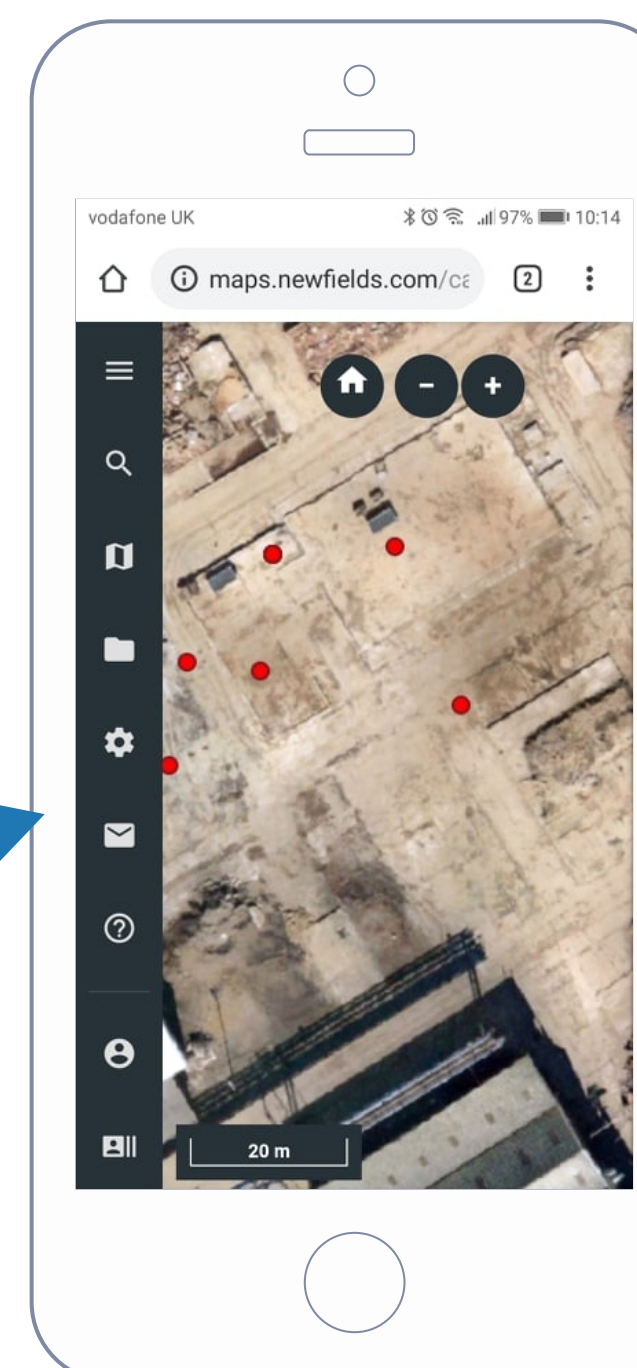
Access, analyse and understand your environmental data using a streamlined, user-friendly interface



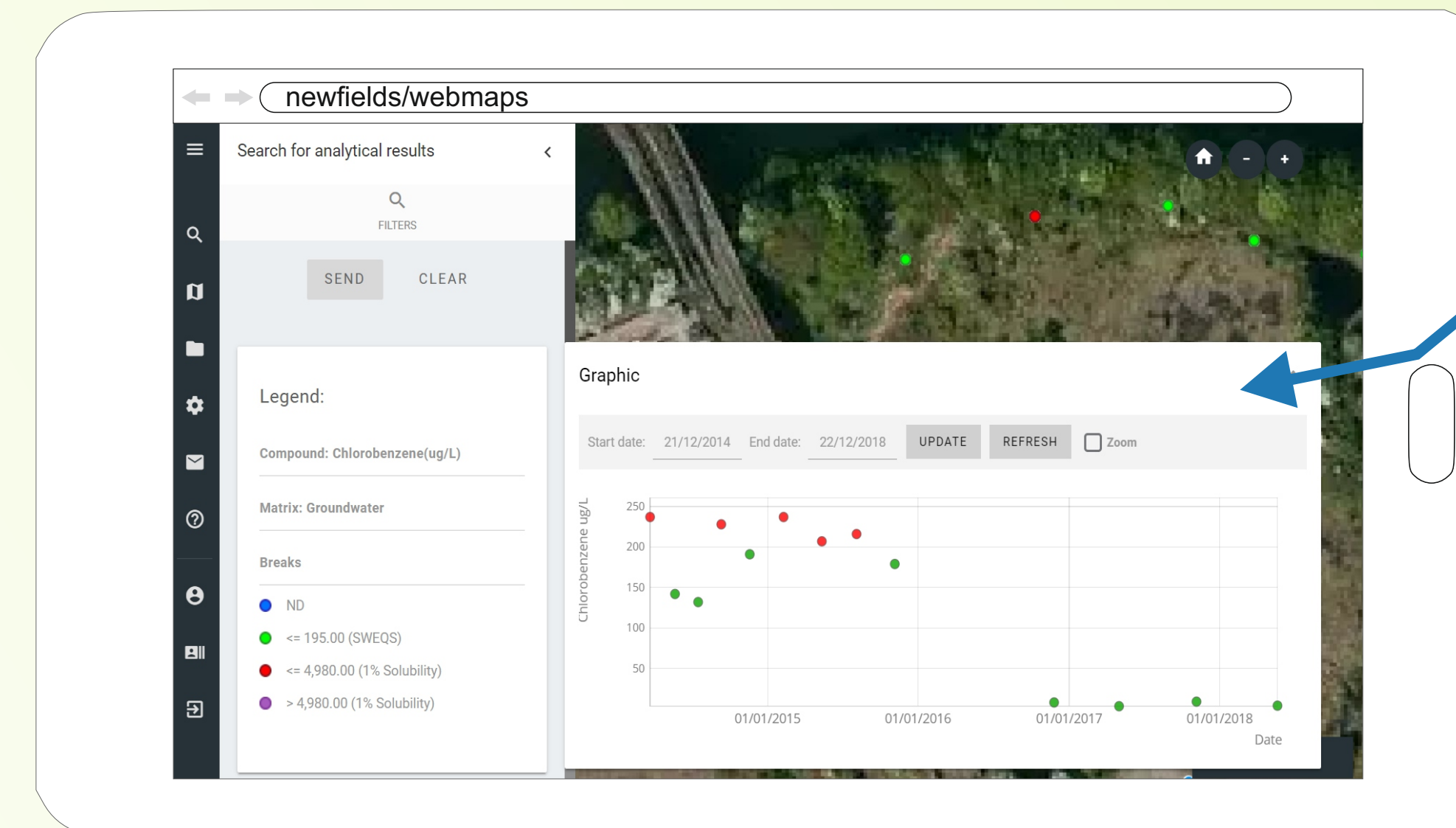
All of your site data in a single platform:

- Analytical results
- Text documents
- Shapefiles
- Aerial photos
- Historical maps
- AutoCAD drawings
- Technical drawings
- 3D surfaces
- Borehole logs
- Geological cross-sections

This data viewer is built according to your needs and can be accessed securely via your computer, smartphone or tablet.



WebGIS eliminates unnecessary friction in converting data to actionable intelligence.



Interactive visualization of analytical results and trends over time.

Benefits:

- ✓ Comprehensive data analysis;
- ✓ All data in a single platform;
- ✓ Allows comparison with environmental standards;
- ✓ Historical trends;
- ✓ Automatic report creation and download,;
- ✓ Improves internal and external communication;
- ✓ No data loss;
- ✓ Data is secured by state of the art security protocols;
- ✓ Online (through web-browser);
- ✓ Access via mobile, computer or tablet;
- ✓ No need for licences or any software installation.

All of your environmental data at your fingertips, anytime and anywhere.

THE RIGHT INFORMATION, AT THE RIGHT TIME, IN THE RIGHT FORMAT, TO THE RIGHT PERSON.